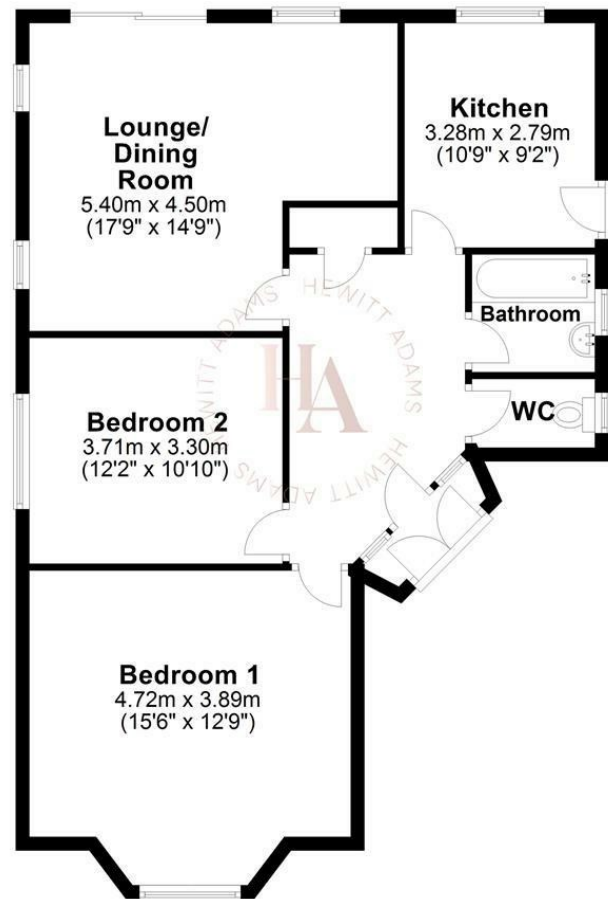




Ground Floor

Approx. 82.6 sq. metres (889.6 sq. feet)



Total area: approx. 82.6 sq. metres (889.6 sq. feet)
For illustration purposes only - not to scale



Covertside, West Kirby, Wirral CH48 9UD

£365,000

2 Bedroom 1 Reception 1 Bathroom C

****Detached Bungalow - Sought After Newton Location - Southerly Facing Garden - Must View!****

Hewitt Adams is delighted to offer to the market this DETACHED two DOUBLE bedroomed bungalow located on the HIGHLY SOUGHT AFTER Covertside in Newton.

Occupying a SOUTHERLY FACING PLOT - the garden and bungalow gets a tremendous amount of SUNLIGHT.

Well maintained, the bungalow has clearly been well loved and cared for. New owners could move in with complete comfort.

In brief the accommodation affords; entrance porch, large hall with space for study area, large L shaped lounge dining room, breakfast kitchen, shower-room and two DOUBLE bedrooms.

With a good sized driveway, Detached garage and a generous SOUTHERLY FACING sunny aspect rear garden laid to lawn and patio. Call Hewitt Adams on 0151 342 8200.

Front Entrance

Into;

Porch

Door to;

Hall

Radiator, power points, cupboards, ample space for a desk / office area

Lounge & Dining Room

17'8" x 14'9" (5.4 x 4.5)

Double glazed doors out to the garden, radiator, power points, fireplace, TV point, double glazed window

Kitchen

10'5" x 9'2" (3.2 x 2.8)

Wall and base units, inset sink, double glazed window, side door, integrated oven and hob, space for white goods, space for breakfast / dining table and chairs

Bedroom One

13'5" x 10'5" (4.1 x 3.2)

Double glazed window, radiator, power points, fitted wardrobes

Bedroom Two

10'9" x 12'2" (3.3 x 3.73)

Double glazed window, radiator, power points

Shower-Room

Comprising shower, low level W.C, wash hand basin, double glazed window

EXTERNALLY

With a good sized driveway, Detached garage and a generous SOUTHERLY FACING sunny aspect rear garden laid to lawn and patio.

